



POWERGUIDE

Interactive Manuals

Simple delivery and clear demonstration of complex technological and operational information





Clear and easy-to-use manual is a tool for improving the efficiency of the workshop or service

POWERGUIDE – software for creating and using interactive 3D-instructions for assembly, maintenance, repair and operations

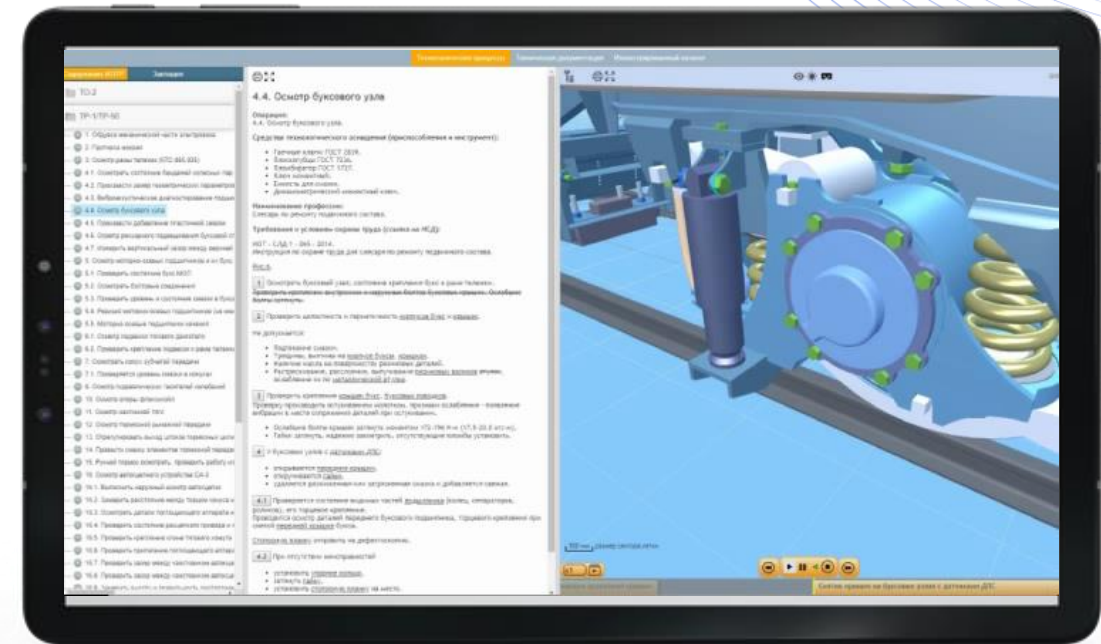


POWERGUIDE includes interactive 3D models and realistic animations



All data is deeply interconnected, which allows you to instantly find all the related documentation and get a clear vision of any process at the right time

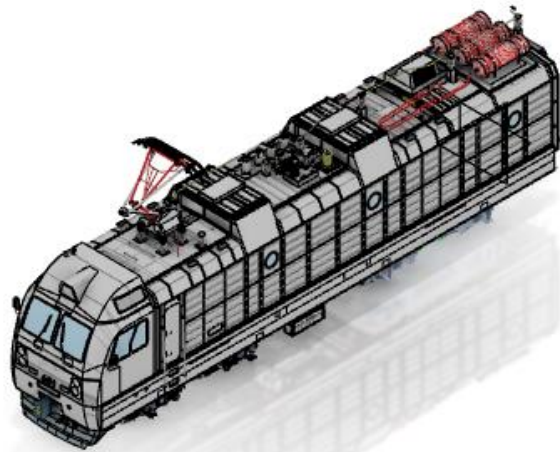
Play video





Initial Data for POWERGUIDE

The system is based on interactive relationships between geometry and reference documents



3D Model



Interactive manuals

- Technological processes
- MRO instructions
- Drawings and Specifications
- Data Sheets
- Certificates
- Forms
- Standards
- Images
- Videos...



POWERGUIDE Application Area

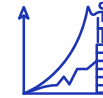


01

Assembly instructions

Provide visual reference materials for complex operations

- ✓ Reduce time and improve quality
- ✓ Equipment and tools, time allowance, material consumption
- ✓ Customizable integration with Process Planning systems



02

Operating instructions

Provide your customers with interactive 3D manuals for operating complex products

- ✓ Location and structure of assemblies and components
- ✓ Illustrated parts catalog with Part Numbers and attributes
- ✓ Troubleshooting



03

Maintenance, Repair and Overhaul guides

Improve quality of maintenance by minimizing mistakes during complex MRO operations

- ✓ Demonstration of best practices with tooling and tools
- ✓ Spare Parts Kits
- ✓ Worldwide access to interactive manuals at the right time



04

Learning systems

Train employees faster with visual interactive content

- ✓ Digital product and process model in virtual reality for viewing and access areas in real-world scale
- ✓ Training without the need for decommissioning real product and being in the workshop
- ✓ Increase employee skills versatility



Compare POWERGUIDE with traditional instructions

Criterion	Traditional Instructions	Digital Manual POWERGUIDE
Formats	Text documents, drawings	Text documents, drawings, 3D models, process animation, images, video, etc.
Devices	PC	PC, tablet, smartphone, industrial terminal, head-mounted display
Search for Information	It takes a lot of time to search and compare documents, create copies and print	Searching for information in the database instantly displays the process, sketches, diagrams, equipment, consumption of materials and other related data
Tracking the actual version	Difficult	Be sure that users have access to the latest up-to-date version of documents and data modules
Knowledge base	-	Best practices are added to the database - you will not lose the experience with the departure of experienced employees
Interactivity	-	User can interact with information - select components on a 3D model, explore Bill of Materials, load any related document added to the system and much more
Changes	The process of making changes and controlling delivery is complex, and the relevance of instructions in the workplace is not guaranteed	Make the change only once - all related data will change automatically and deliver to user by one click



Process Animation



View the necessary process as short animated videos, step by step, with access to relative information

- ✔ Choose playback speed
- ✔ View individual steps or entire operations



Explore the structure of assemblies and components:

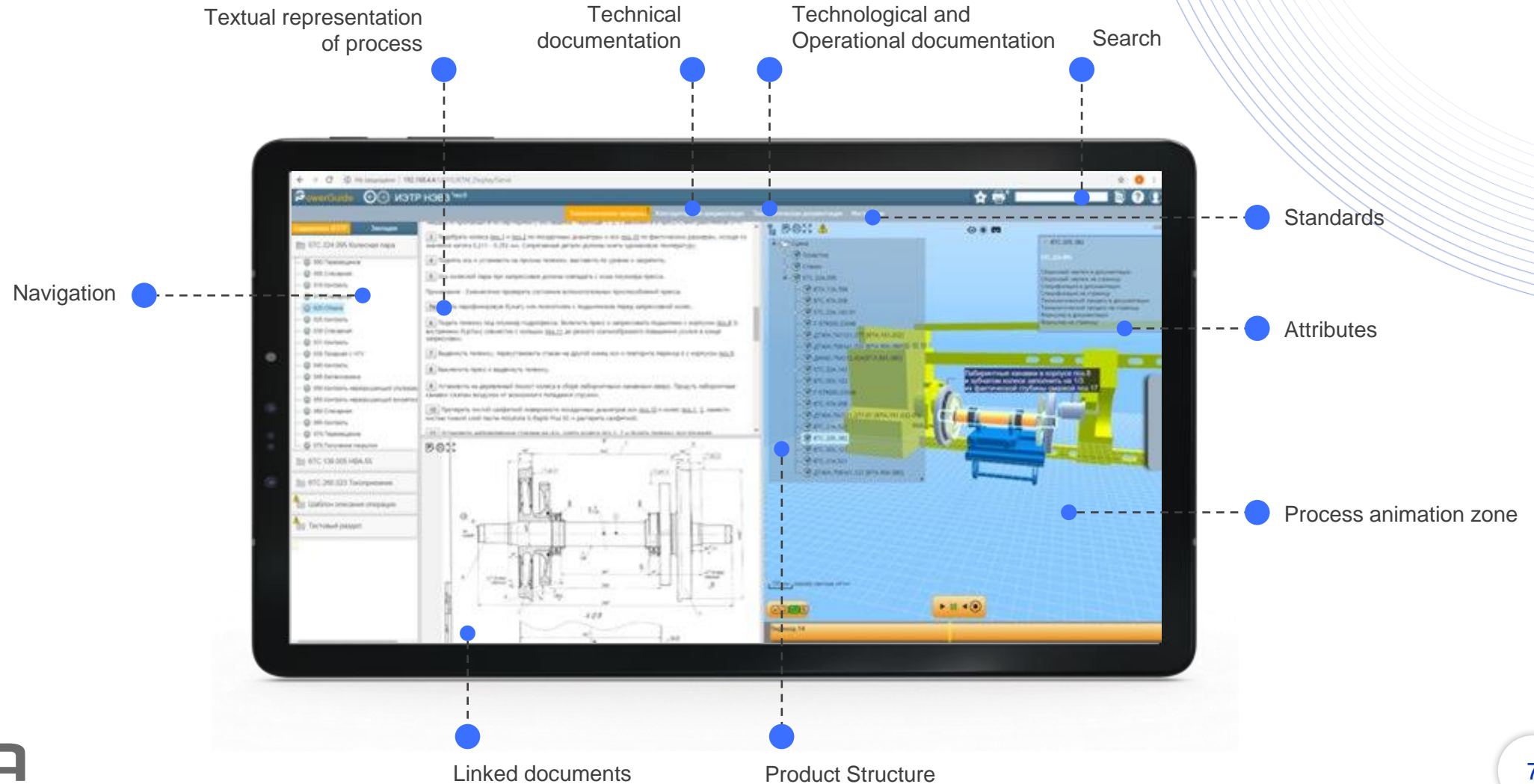
- ✔ Change view at any moment
- ✔ Hide/Show blocking objects
- ✔ Open interactive Bill of Materials
- ✔ Select component in 3D to read its own attributes and linked documents

Play Video



Interface

POWERGUIDE has a flexible interface. It is possible to place text, drawings, product structure and 3D model with process animation on one screen. All data are interconnected and provide end-to-end learning





3D Model and Connected Documents

Interactivity is achieved through a deep connection of the 3D models, drawings, text descriptions of the processes, videos and other data



Drawings, specifications and technological documentation is instantly loaded by selecting component. Thus, the user gets the most complete view of the process

1 click to search all related documents



Convenient and intuitive editor



POWERGUIDE is equipped with its own editor in web, which allows you to work effectively with:

- ✓ 3D animation
- ✓ Product Structure
- ✓ Materials
- ✓ Annotations
- ✓ Marking drawings and etc.



Access to Virtual Reality

One of the problems of preparing personnel is the need to spend time and money on training new employees to a level where they can safely, efficiently and independently solve problems

Thanks to the digital model of the product and processes in virtual reality, training can be accelerated

- ✓ The interactive process of learning
- ✓ High rate of assimilation of information due to the realistic presentation of the processes compared to traditional methods
- ✓ A complete picture of real scale, visibility zones and access to the assemblies and components of a real product
- ✓ Training without the need for decommissioning real product and being in the workshop
- ✓ Increased interest through gamification
- ✓ Every created animation already prepared for VR and can be played by one click





Key Possibilities with POWERGUIDE



Deliver in time anywhere. POWERGUIDE works online and does not require local installation. Guides open in a browser on any device



Accelerate the development and coordination of new manufacturing and MRO processes



Build communication between the workshop and technologists to introduce a culture of continuous improvement



Create a single source of data with all technological, MRO and operational processes of the enterprise



Accumulate best practices and reduce mistakes due to information support



Accelerate learning with visual and interactive processes



Import models from any CAD: SOLIDWORKS, CATIA, CREO, AutoCAD, Inventor, Siemens NX, etc.